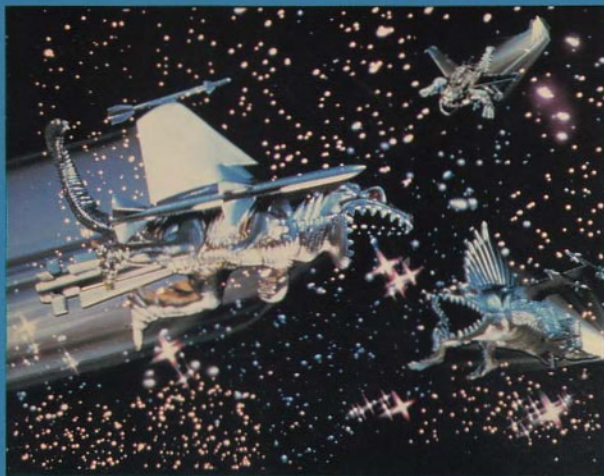


**TANDY**<sup>®</sup>  
Color Computer

Cat. No. 26-3099

# DEMON ATTACK<sup>®</sup>



*IMAGIC*





# DEMON ATTACK

Demon Attack Program:  
© 1984, IMAGIC  
Licensed to Tandy Corporation  
All Rights Reserved.

All portions of this software are copyrighted and are the proprietary and trade secret information of Tandy Corporation and/or its licensor. Use, reproduction or publication of any portion of this material without the prior written authorization by Tandy Corporation is strictly prohibited.

Demon Attack Program Manual:  
© 1985, Tandy Corporation  
All Rights Reserved.

Reproduction or use, without express written permission from Tandy Corporation, of any portion of this manual is prohibited. While reasonable efforts have been taken in the preparation of this manual to assure its accuracy, Tandy Corporation assumes no liability resulting from any errors or omissions in this manual, or from the use of the information contained herein.

10 9 8 7 6 5 4 3 2 1

## **Introduction**

You are protecting the planet against an insidious band of evil demons, all determined to destroy you and invade your earth home. Equipped with one laser gun and two spares, you must shoot and kill a wave of diabolical creatures swarming through the skies before they destroy your supply of laser guns and ultimately turn their rays on you.

If you get past the first onrush of demons, you will be given an extra laser gun to face more fiendish beasts. You may also see demons that multiply and split in two when you hit them and fleet phantom demons that appear and disappear out of thin air.

But the most dreaded creature of all is the Cyclopean demon leader with a huge, ugly mouth and a single eye in its forehead. You must first destroy the demons and the safety shield protecting the demon leader. Only then, can you try to aim and shoot out the eye of this monster that gives birth to thousands of demons.

## Required Equipment

- Color Computer equipped with at least 16K memory
- Standard Television (Color recommended)
- Joysticks

## Loading Instructions

1. Before inserting or removing the Demon Attack® Program Pak™, be sure the computer is **off**. Failure to do so could result in damage to the program pak.
2. Connect the Color Computer to the television set, and move the antenna switchbox control to Computer (or Game).
3. Plug the joysticks controller(s) into the proper jacks located on the back of the computer. If you are playing alone, use the left joystick. For a two-player game, connect the right joystick for Player #2.

4. Insert the Demon Attack Program Pak, label side up, into the slot on the right of the computer. Press firmly until it securely engages, but do not force it.
5. Turn on the television, and tune it to Channel 3 or 4 (whichever is least active in your area).
6. Turn on the Color Computer. Adjust the focus on the television or press the reset button on the back of the computer to obtain a clear picture. Turn up the volume slightly.
7. To change the background color from black to blue, press **CLEAR** when the title screen is displayed.
8. To play using the keyboard rather than with joysticks, press the **←** or **→** key when the title screen is displayed.

## Choosing the Level of Play

You can choose one of three different levels of play for one or two players:

- straight shooting from the laser gun
- tracer shots that move with the laser
- phantom demons that disappear and reappear

At the title screen, select your level as follows.

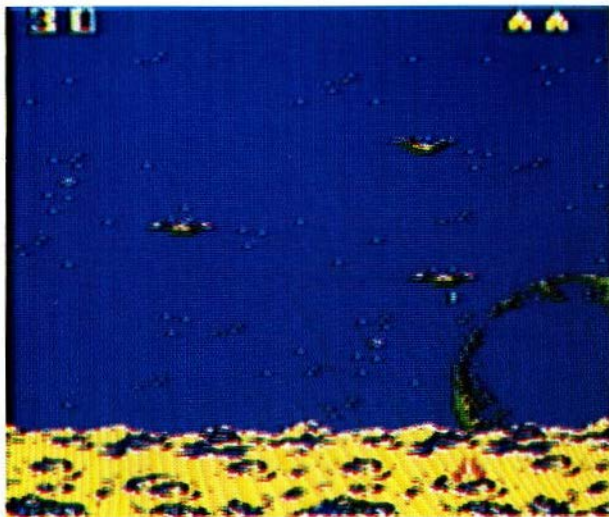
Press for:

- |   |                                |
|---|--------------------------------|
| 1 | one player, straight shooting  |
| 2 | two players, straight shooting |
| 3 | one player, tracer shooting    |
| 4 | two players, tracer shooting   |
| 5 | one player, phantom demons     |
| 6 | two players, phantom demons    |



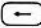

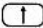
## Playing the Game

After you select a playing level, the screen changes and you can immediately start playing.



Your reserve laser guns are in the upper right corner. If you shoot all demons in a round, you receive an extra laser gun and proceed to the next round of play. (The game is over when all laser guns have been blown up.) As you shoot demons, the running total score is displayed in the upper left corner. Points scored increase with each new round of play.

Move the joystick to the left or right depending on which direction you want to move the laser gun. To shoot a demon, press the fire button.

If you are using the keyboard, press the  and  keys to move the laser gun. Press the  to fire the laser gun.

**Note on Tracer Shooting:** If you are tracer shooting (Levels 3 and 4), a good strategy is to fire the laser gun and then pass directly below the demon you want to hit. The rays will trace you and hit the target, while you can avoid being hit from above by the demon.

In a two-player game, the left joystick player goes first. After Player #1 has completed Round 1 (or lost all laser guns), the score is displayed, and it's Player #2's turn.

After you complete two rounds of play, some demons that you hit split in two, increasing your danger of being hit. Also, the demon leader appears. Try to shoot any demons while they are in the shield protecting the leader so that you are not only scoring points but also penetrating the shield. After you shoot all the demons and break through the shield, aim for the eye of the demon leader. You must successfully shoot out the eye or lose a laser gun to proceed to the next round of play.

Whenever you want to freeze all action, press (P) to pause. To resume playing, press (R).



## End of a Game

After you have lost all laser guns in a one-player game, the title screen reappears. In a two-player game, after both players have run out of laser guns, the title screen is displayed along with the scores of the two players. To continue playing after a game is over, press (R) to start at the last round reached or press the reset button to play another game from the beginning (Round 1).

When you are finished playing, turn off the television and the Color Computer. Remove the Demon Attack Program Pak and store it in a safe place.



TERMS AND CONDITIONS OF SALE AND LICENSE OF TANDY COMPUTER SOFTWARE PURCHASED AND LICENSED FROM RADIO SHACK COMPANY-OWNED COMPUTER CENTERS, RETAIL STORES AND RADIO SHACK FRANCHISEES OR DEALERS AT THEIR AUTHORIZED LOCATIONS

## LIMITED WARRANTY

TANDY Software is licensed on an "AS IS" basis, without warranty. The original CUSTOMER'S exclusive remedy, in the event of a Software manufacturing defect, is its repair or replacement within thirty (30) calendar days of the date of the Radio Shack sales document received upon license of the Software. The defective Software shall be returned to a Radio Shack Computer Center, a Radio Shack retail store, a participating Radio Shack franchisee or a participating Radio Shack dealer along with the sales document.

**EXCEPT AS PROVIDED HEREIN, RADIO SHACK MAKES NO EXPRESS WARRANTIES, AND ANY IMPLIED WARRANTY OF MERCHANTABILITY OR FITNESS FOR A PARTICULAR PURPOSE IS LIMITED IN ITS DURATION TO THE DURATION OF THE WRITTEN LIMITED WARRANTIES SET FORTH HEREIN.**

Some states do not allow limitations on how long an implied warranty lasts, so the above limitation(s) may not apply to CUSTOMER.

**RADIO SHACK SHALL HAVE NO LIABILITY OR RESPONSIBILITY TO CUSTOMER OR ANY OTHER PERSON OR ENTITY WITH RESPECT TO ANY LIABILITY, LOSS OR DAMAGE CAUSED OR ALLEGED TO BE CAUSED DIRECTLY OR INDIRECTLY BY "SOFTWARE" LICENSED OR FURNISHED BY RADIO SHACK, INCLUDING, BUT NOT LIMITED TO, ANY INTERRUPTION OF SERVICE, LOSS OF BUSINESS OR ANTICIPATORY PROFITS OR INDIRECT, SPECIAL, OR CONSEQUENTIAL DAMAGES.**

Some states do not allow the limitation or exclusion of incidental or consequential damages, so the above limitation(s) or exclusion(s) may not apply to CUSTOMER.

## SOFTWARE LICENSE

RADIO SHACK grants to CUSTOMER a non-exclusive, paid-up license to use the Tandy Software on **one** computer, subject to the following provisions:

- A. Except as otherwise provided in this Software License, applicable copyright laws shall apply to the Software.
- B. Title to the medium on which the Software is recorded is transferred to CUSTOMER, but not title to the Software.
- C. CUSTOMER shall not use, make, manufacture, or reproduce copies of Software except for use on **one** computer and as is specifically provided in this Software License. Customer is expressly prohibited from disassembling the Software.
- D. CUSTOMER is permitted to make additional copies of the Software **only** for backup or archival purposes or if additional copies are required in the operation of **one** computer with the Software, but only to the extent the Software allows a backup copy to be made.
- E. All copyright notices shall be retained on all copies of the Software.

The warranties granted herein give the **original** CUSTOMER specific legal rights, and the **original** CUSTOMER may have other rights which vary from state to state.

**RADIO SHACK, A DIVISION OF TANDY CORPORATION**

**U.S.A.: FORT WORTH, TEXAS 76102  
CANADA: BARRIE, ONTARIO L4M 4W5**

---

**TANDY CORPORATION**

**AUSTRALIA**

**91 KURRAJONG AVENUE  
MOUNT DRUITT, N.S.W. 2770**

**BELGIUM**

**PARC INDUSTRIEL  
5140 NANINNE (NAMUR)**

**U. K.**

**BILSTON ROAD WEDNESBURY  
WEST MIDLANDS WS10 7JN**